

Bath stoves LK100

Fuel: wood

Output: 8 kW

Water volume: 95 l

Advantages of bath stoves:

- Independent source of DHW
- Unpressure equipment
- Retro design
- Fast heating of DHW
- Low weight
- Big volume of DHW
- Easy operation and maintenance



Bath stoves Z100

Fuel: wood

Output: 8 kW

Water volume: 100 l

Advantages of bath stoves:

- Independent source of DHW
- Low pressure device
- Retro design
- Fast heating of DHW
- Low weight
- Big volume of DHW
- Easy operation and maintenance
- Stainless steel exchanger

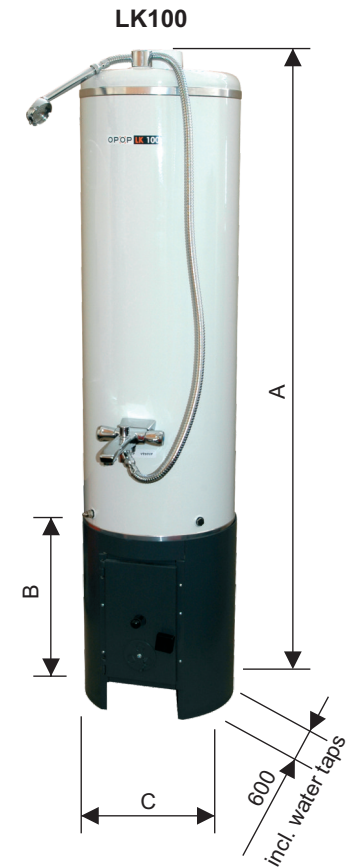


Technical parameters of LK100

| | | |
|--------------------------------------|------------------|------|
| Fuel | wood, wood waste | |
| Water volume | l | 95 |
| Output | kW | 8 |
| Efficiency | % | 70 |
| Operating chimney draft | Pa | 10 |
| Weight | kg | 55 |
| A - Height | mm | 1560 |
| B - Furnace height | mm | 430 |
| C - Furnace diameter | mm | 370 |
| Flue diameter | mm | 95 |
| Fuel consumption with nominal output | kg/h | 2,6 |

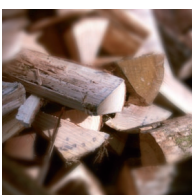


wood



Technical parameters of Z100

| | | |
|--------------------------------------|------------------|------|
| Fuel | wood, wood waste | |
| Water volume | l | 100 |
| Output | kW | 8 |
| Efficiency | % | 58,5 |
| Operating chimney draft | Pa | 10 |
| Weight | kg | 65 |
| A - Height | mm | 1520 |
| B - Furnace height | mm | 430 |
| C - Furnace diameter | mm | 370 |
| Flue diameter | mm | 100 |
| Fuel consumption with nominal output | kg/h | 2,6 |



wood

